

Customer :

customer

Customer part :

customer part

Comment :

Comment

S1=2.04

S2=2.3

Tmax=458

Tp S2=497.0

PI=0.47

HI=67

Sample =1701.60

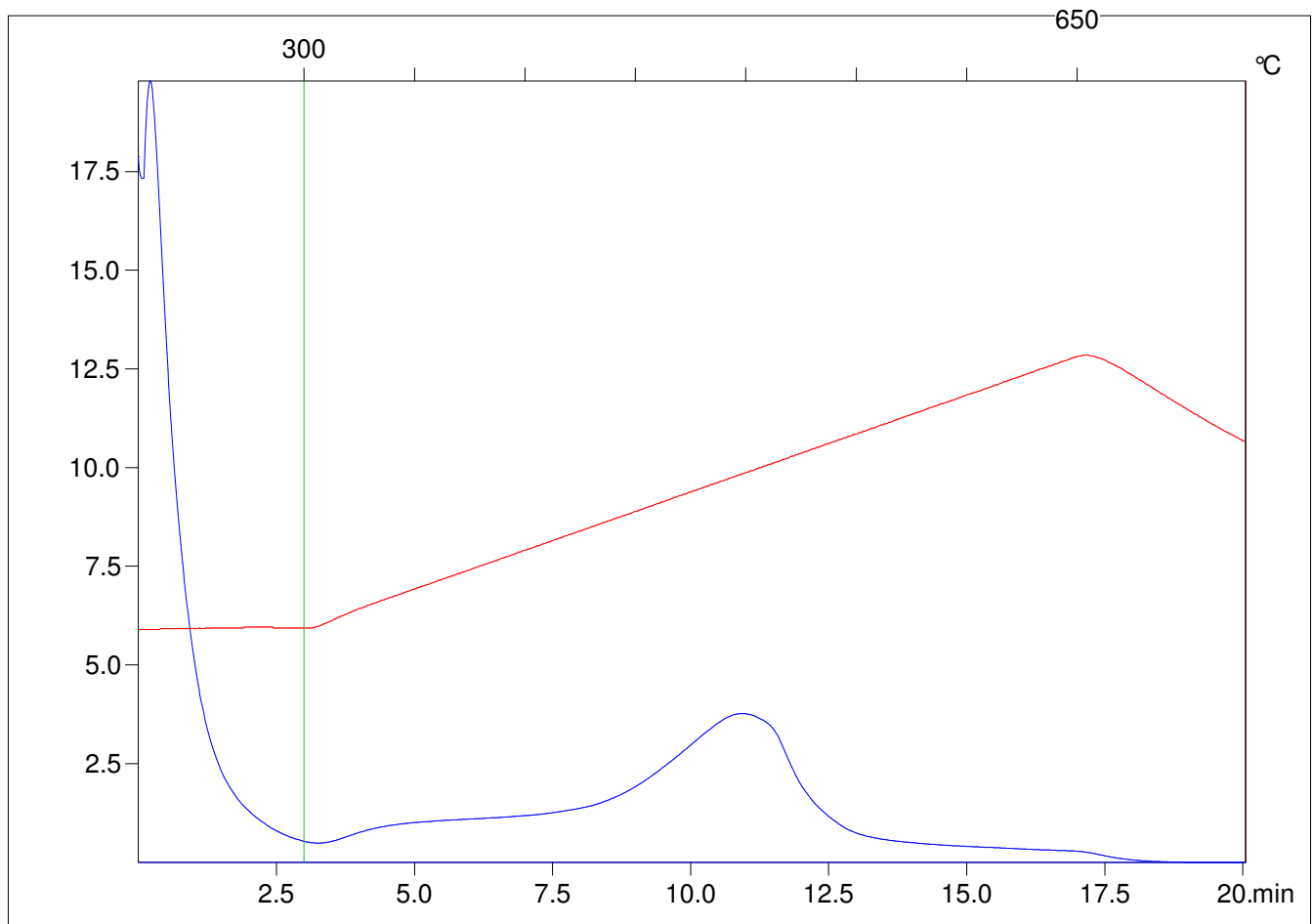
Method =Bulk Rock

Cycle=Basic

KFID(10*9)=1444

Qty =70.4

TOC=3.44



C:\VINC\PK1_1792\PK084.R00 : FID pyrolysis graphic

State

Pyro Status

Oxi Status